

Report No.:

Test Time: 26.08.2020 19:21

Luminaire Property

Luminaire Manufacturer:

Luminaire Description: FD 112 200W 5000K 120gr. prozrachnoe steclo DALI

Luminous Length (mm): 364

Luminous Width (mm): 364

Luminous Height (mm): 138

Voltage: 221.7 V

Current: 0.921 A

Power: 201.02 W

Power Factor: 0.983

Photometric Results

CIE Class: Direct

Measurement Flux: 31719.3 lm

Downward Ratio: 100%

Total Rated Lamp Lumens: 31719.3 lm

Efficiency: 100%

Upward Ratio: 0%

Field Angle(C0/C180,C90/C270,C45/C225,C135/315): 152.5, 152.1, 152.1, 152.1

Beam Angle(C0/C180,C90/C270,C45/C225,C135/315): 111.7, 112.1, 113.0, 113.0

Luminaire Efficacy Rating (LER): 157.84

Central Intensity: 11492.77 cd

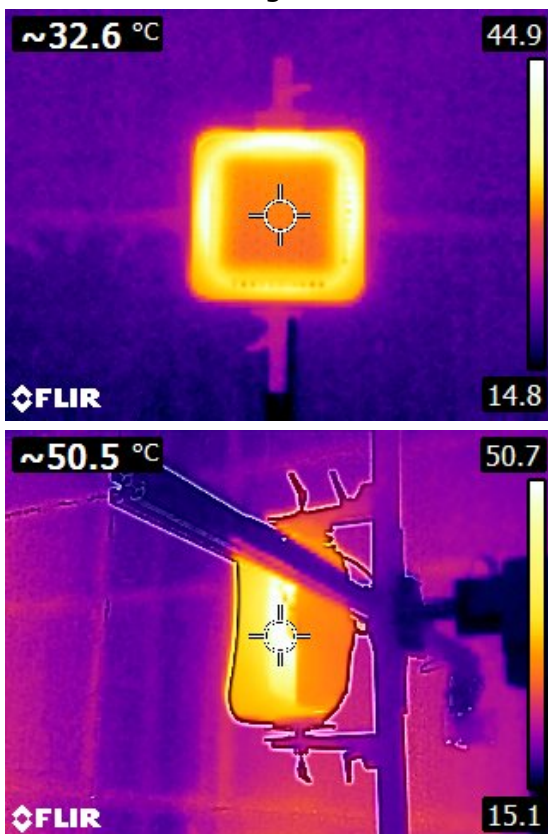
Max. Intensity: 11493.5 cd

Pos of Max. Intensity: H157.5 V0

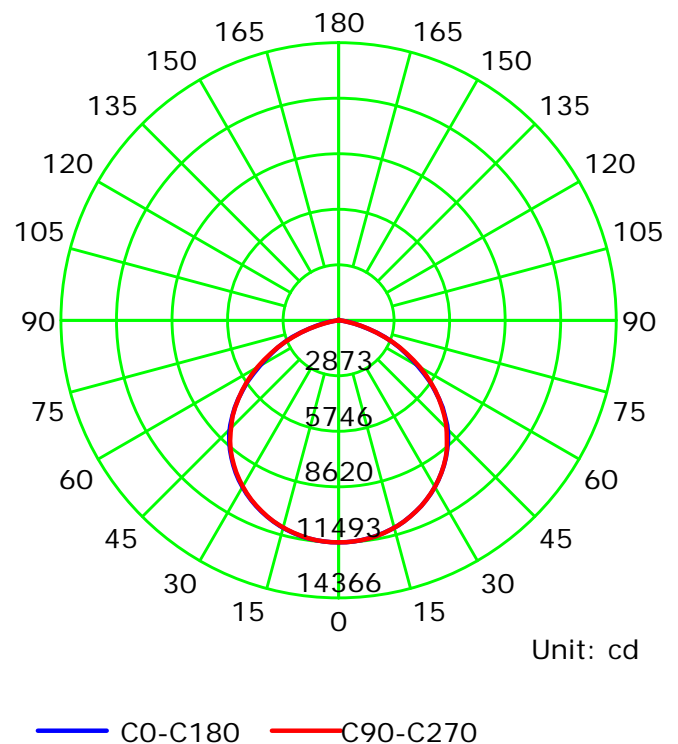
S/MH(C0/C180): 1.29

S/MH(C90/C270): 1.28

Termogramma



Luminous Intensity Distribution Curve



C Plane (°):0.0-360.0: 22.5

Test Lab:

Test Type: TYPE C

Temperature:

Operator:

Gamma Plane (°):0.0-180.0:2.0

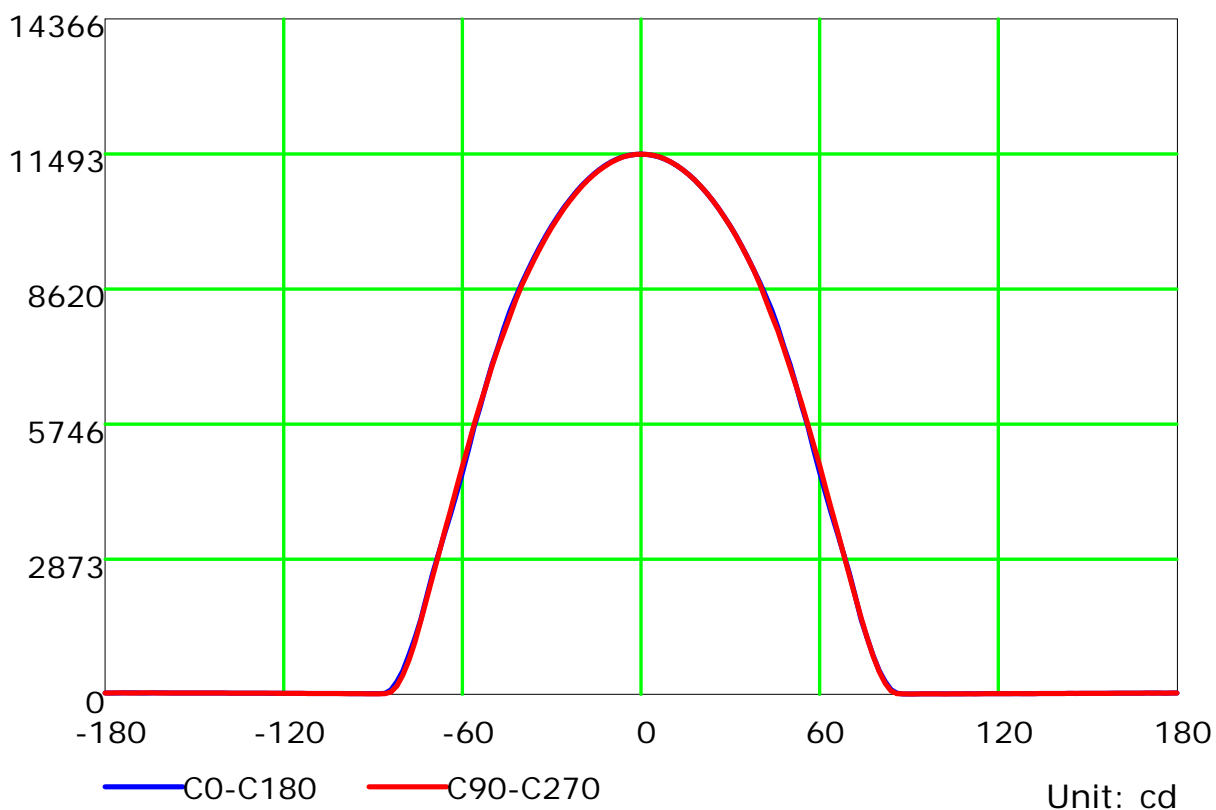
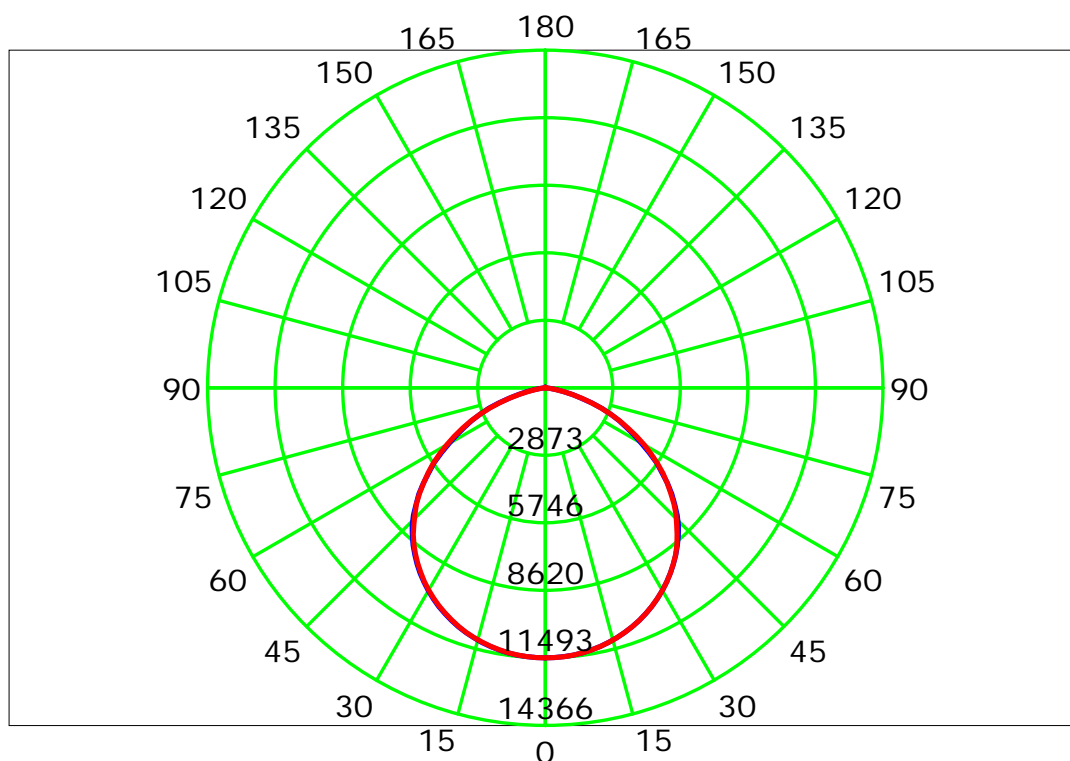
Test Device: LSG-1800B

Distance: 12.677 m

Humidity:

Inspector:

Luminous Intensity Distribution Curve



C Plane (°): 0.0-360.0: 22.5

Test Lab:

Test Type: TYPE C

Temperature:

Operator:

Gamma Plane (°): 0.0-180.0: 2.0

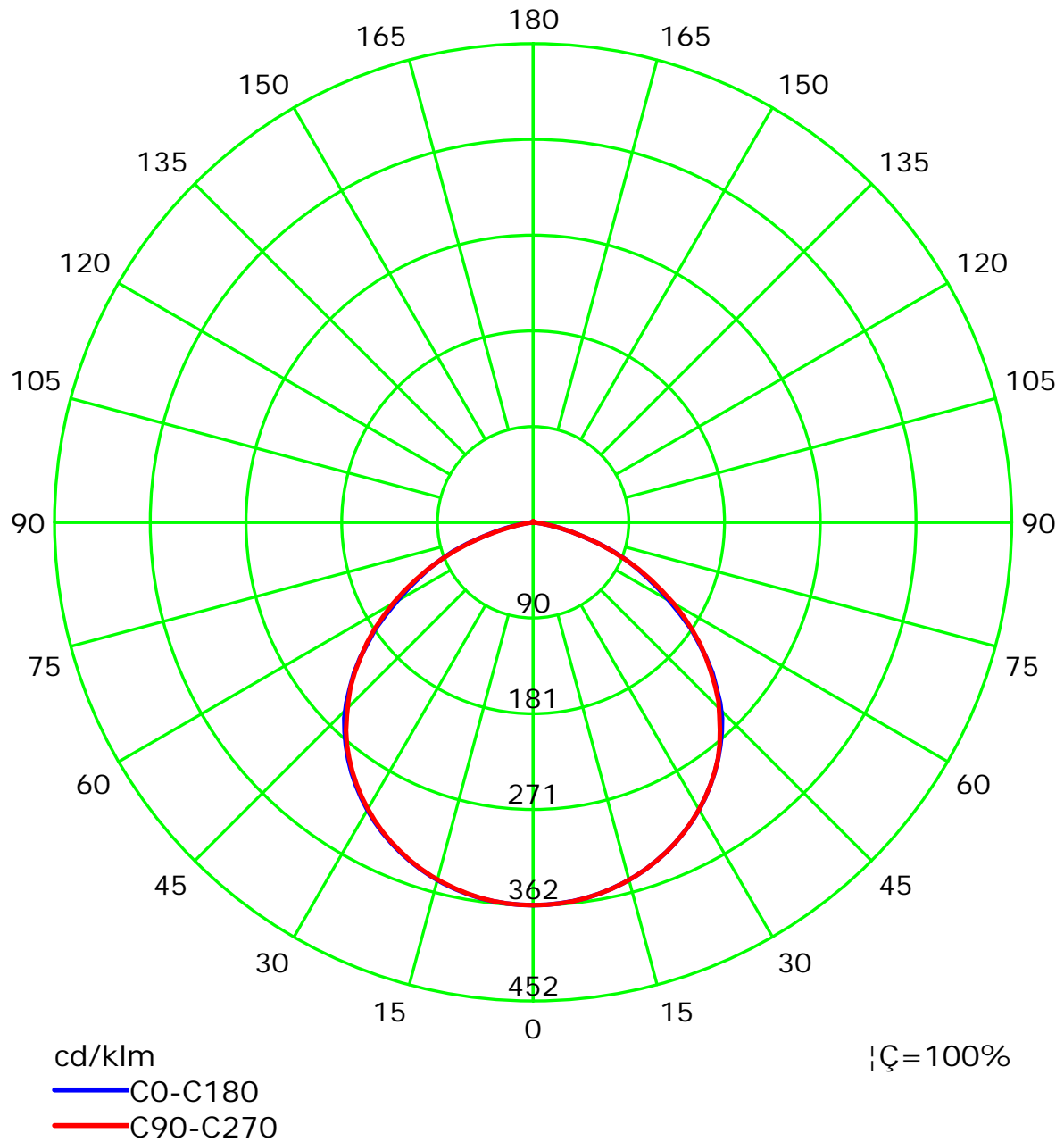
Test Device: LSG-1800B

Distance: 12.677 m

Humidity:

Inspector:

Luminous Intensity Distribution Curve(cd/klm)



C Plane (°):0.0-360.0: 22.5

Test Lab:

Test Type: TYPE C

Temperature:

Operator:

Gamma Plane (°):0.0-180.0:2.0

Test Device: LSG-1800B

Distance: 12.677 m

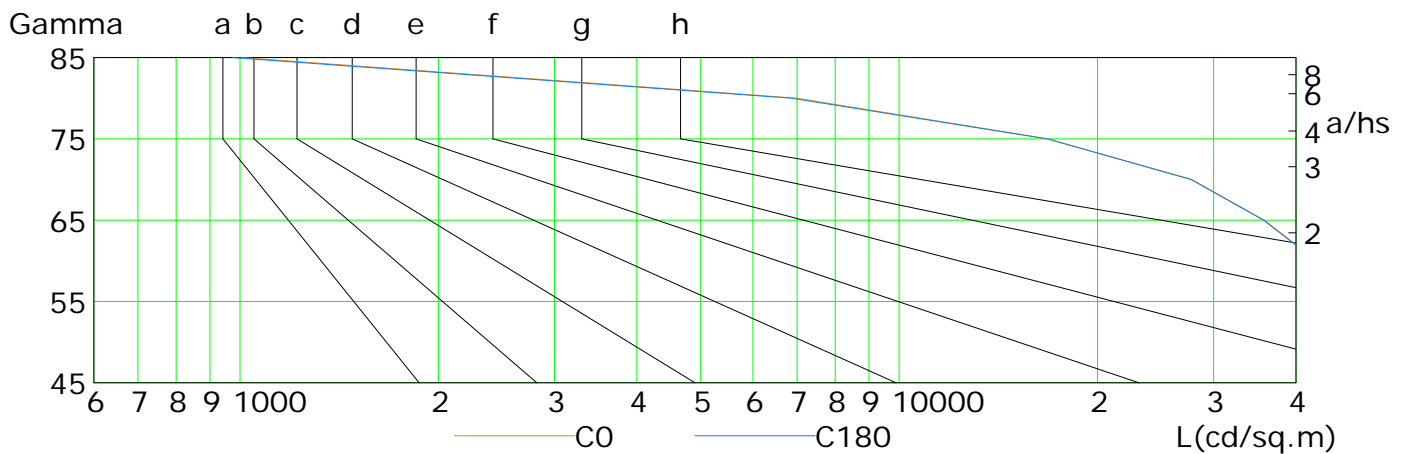
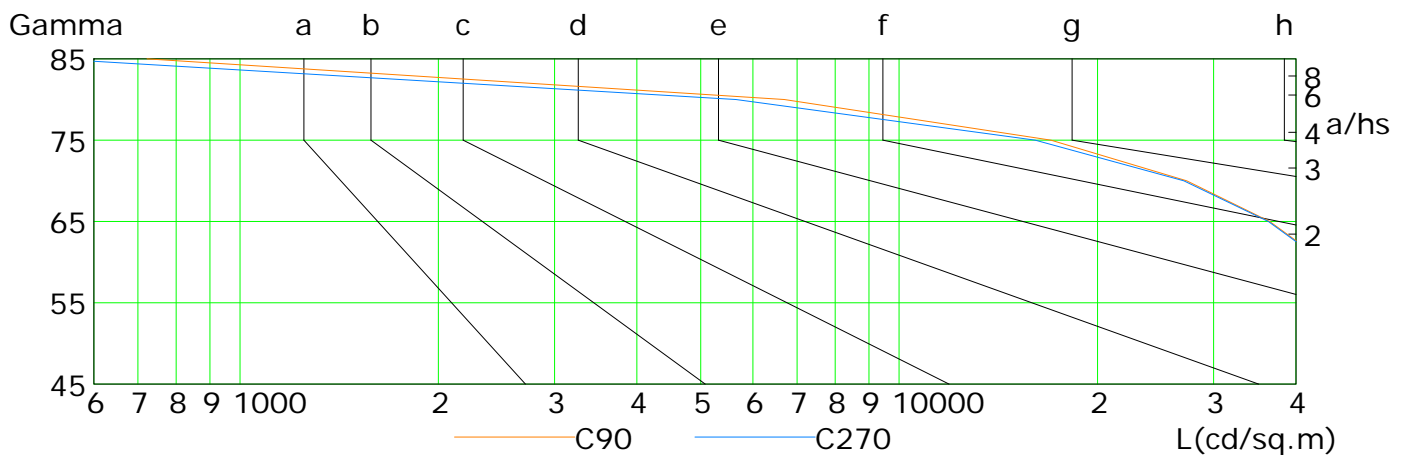
Humidity:

Inspector:

Lum Limit Curve

Dazzle	Quality	Illuminance (lx)							
1.15	A	2000	1000	500	<=300				
1.50	B		2000	1000	500	<=300			
1.85	C			2000	1000	500	<=300		
2.20	D				2000	1000	500	<=300	
2.55	E					2000	1000	500	<=300

a b c d e f g h



L(cd/sq.m)	G45	G50	G55	G60	G65	G70	G75	G80	G85
C0	61805	56841	50588	43050	35794	27805	16802	6999	1007
C90	61063	56317	50960	44402	36494	27311	16999	6694	723
C180	61777	56821	50521	42931	35722	27728	16779	6875	975
C270	61001	56551	50958	44189	36312	27040	16088	5654	522

C Plane (°):0.0-360.0: 22.5

Test Lab:

Test Type: TYPE C

Temperature:

Operator:

Gamma Plane (°):0.0-180.0:2.0

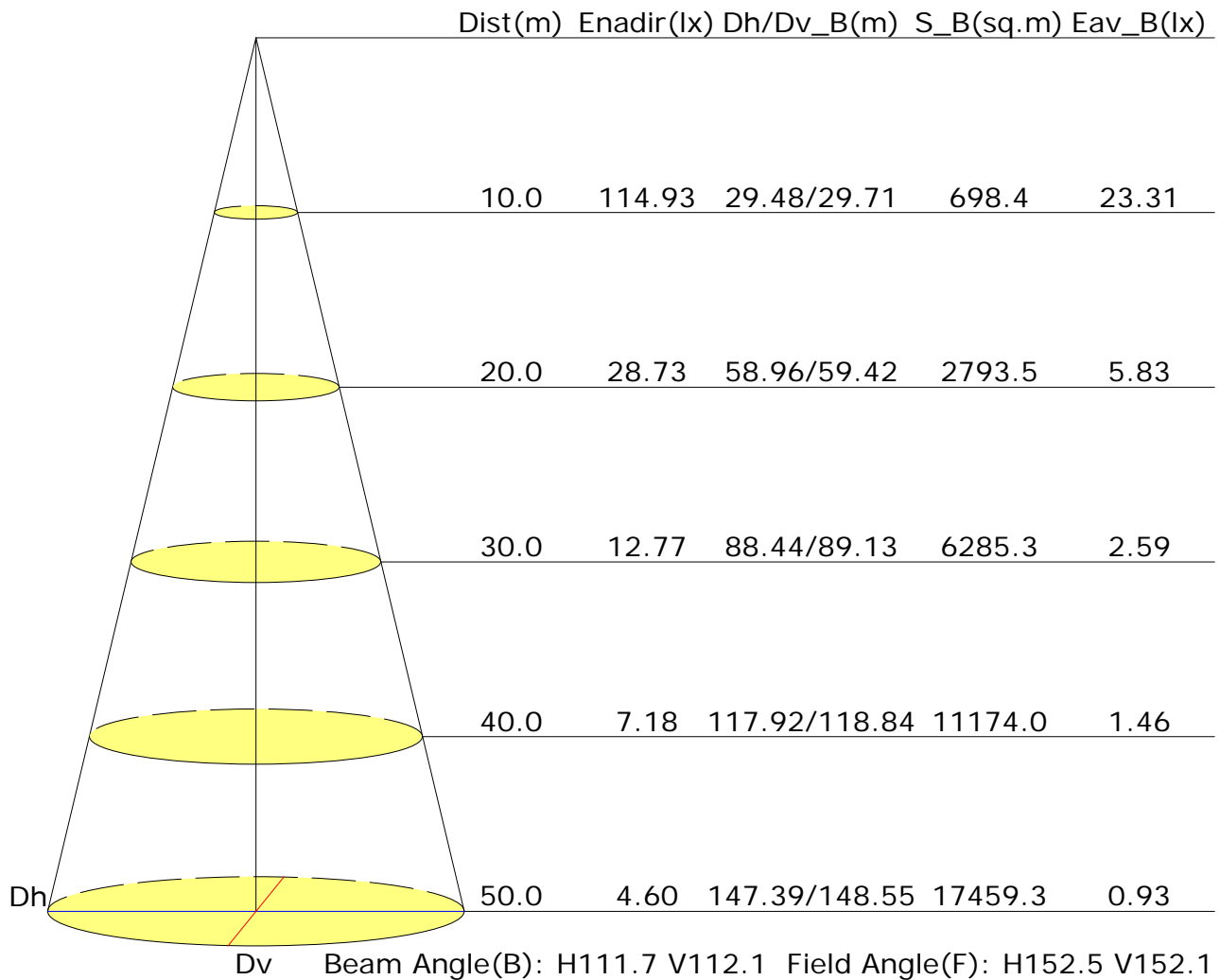
Test Device: LSG-1800B

Distance: 12.677 m

Humidity:

Inspector:

Illuminance at a Distance



UGR Table

Reflectance:										
Ceiling (cavity)	0.7	0.7	0.5	0.5	0.3	0.7	0.7	0.5	0.5	0.3
Wall	0.5	0.3	0.5	0.3	0.3	0.5	0.3	0.5	0.3	0.3
Reference plane	0.2	0.2	0.2	0.2	0.2	0.2	0.2	0.2	0.2	0.2
Room dimensions	Viewed crosswise					Viewed endwise				
X=2H Y=2H	26.0	27.4	26.3	27.6	27.9	26.1	27.4	26.4	27.7	27.9
3H	27.0	28.2	27.3	28.5	28.7	27.0	28.2	27.3	28.5	28.8
4H	27.2	28.3	27.5	28.6	28.9	27.2	28.4	27.6	28.6	28.9
6H	27.2	28.3	27.6	28.6	28.9	27.2	28.3	27.6	28.6	28.9
8H	27.2	28.2	27.5	28.5	28.8	27.2	28.2	27.6	28.5	28.9
12H	27.1	28.1	27.5	28.4	28.8	27.1	28.1	27.5	28.5	28.8
X=4H Y=2H	26.5	27.6	26.8	27.9	28.2	26.5	27.7	26.9	27.9	28.3
3H	27.5	28.5	27.9	28.8	29.2	27.6	28.5	27.9	28.9	29.2
4H	27.8	28.6	28.2	29.0	29.4	27.8	28.7	28.2	29.0	29.4
6H	27.8	28.6	28.3	29.0	29.4	27.8	28.6	28.3	29.0	29.4
8H	27.8	28.5	28.3	28.9	29.4	27.8	28.5	28.3	28.9	29.4
12H	27.8	28.4	28.2	28.8	29.3	27.8	28.4	28.2	28.8	29.3
X=8H Y=4H	27.8	28.5	28.3	28.9	29.4	27.8	28.5	28.3	29.0	29.4
6H	27.9	28.5	28.4	28.9	29.4	27.9	28.5	28.4	28.9	29.4
8H	27.9	28.4	28.4	28.8	29.3	27.9	28.4	28.4	28.8	29.3
12H	27.9	28.3	28.4	28.8	29.3	27.9	28.3	28.4	28.8	29.3
X=12H Y=4H	27.8	28.4	28.2	28.8	29.3	27.8	28.4	28.3	28.9	29.3
6H	27.9	28.4	28.4	28.8	29.3	27.9	28.4	28.4	28.8	29.3
8H	27.9	28.3	28.4	28.8	29.3	27.9	28.3	28.4	28.8	29.3
Variations with the observer position at spacings:										
S=1.0H	+0.2/-0.3					+0.2/-0.3				
S=1.5H	+0.5/-0.9					+0.5/-0.8				
S=2.0H	+1.1/-1.6					+1.0/-1.6				

Calculate in accordance with CIE Pub.117. The table is revised with 31719Im ($8\log(F/F_0) = 12.0$).

Utilisation Factor Table(Floor cavity)

Utilisation Factors UF(F)			SHR NOM = 1.25									
Room Reflectance			Room Index(RI)									
Ceiling	Wall	Floor	0.75	1.00	1.25	1.50	2.00	2.50	3.00	4.00	5.00	
0.70	0.50	0.20	0.58	0.69	0.76	0.82	0.89	0.94	0.98	1.02	1.05	
	0.30		0.50	0.61	0.69	0.75	0.83	0.89	0.93	0.98	1.01	
	0.20		0.45	0.56	0.64	0.70	0.79	0.85	0.89	0.95	0.99	
0.50	0.50	0.20	0.56	0.67	0.74	0.79	0.86	0.91	0.94	0.98	1.00	
	0.30		0.50	0.60	0.68	0.73	0.81	0.86	0.90	0.95	0.98	
	0.20		0.45	0.55	0.63	0.69	0.77	0.83	0.87	0.92	0.95	
0.30	0.50	0.20	0.55	0.65	0.72	0.77	0.83	0.87	0.90	0.94	0.97	
	0.30		0.49	0.59	0.67	0.72	0.79	0.84	0.87	0.92	0.94	
	0.20		0.44	0.55	0.62	0.68	0.75	0.81	0.84	0.89	0.92	
0.00	0.00	0.00	0.42	0.52	0.59	0.65	0.72	0.77	0.80	0.85	0.88	
Rating: 201W Photometrically tested without ceiling board. Multiply UF values by service correction factors Calculate in accordance with CIBSE Technical Memorandum NO.5 1980												

Utilisation Factor Table(Wall)

Utilisation Factors UF(W)			SHR NOM = 1.25									
Room Reflectance			Room Index(RI)									
Ceiling	Wall	Floor	0.75	1.00	1.25	1.50	2.00	2.50	3.00	4.00	5.00	
0.70	0.50	0.20	0.97	0.79	0.67	0.58	0.45	0.37	0.32	0.24	0.20	
	0.30		0.81	0.68	0.58	0.51	0.41	0.34	0.29	0.23	0.19	
	0.20		0.70	0.59	0.52	0.46	0.37	0.32	0.27	0.21	0.18	
0.50	0.50	0.20	0.94	0.76	0.64	0.55	0.43	0.39	0.30	0.23	0.18	
	0.30		0.79	0.66	0.56	0.49	0.40	0.33	0.28	0.22	0.18	
	0.20		0.69	0.58	0.51	0.45	0.36	0.31	0.26	0.21	0.17	
0.30	0.50	0.20	0.91	0.73	0.61	0.53	0.41	0.34	0.29	0.22	0.18	
	0.30		0.78	0.64	0.55	0.48	0.38	0.32	0.27	0.21	0.17	
	0.20		0.68	0.57	0.50	0.44	0.35	0.30	0.25	0.20	0.16	
0.00	0.00	0.00	0.58	0.47	0.40	0.35	0.28	0.23	0.19	0.15	0.12	
Rating: 201W Photometrically tested without ceiling board. Multiply UF values by service correction factors Calculate in accordance with CIBSE Technical Memorandum NO.5 1980												

Utilisation Factor Table(Ceiling cavity)

Utilisation Factors UF(C)			SHR NOM = 1.25								
Room Reflectance			Room Index(RI)								
Ceiling	Wall	Floor	0.75	1.00	1.25	1.50	2.00	2.50	3.00	4.00	5.00
0.70	0.50	0.20	0.17	0.18	0.18	0.19	0.20	0.21	0.21	0.22	0.22
	0.30		0.10	0.11	0.13	0.14	0.15	0.17	0.18	0.19	0.20
	0.20		0.05	0.07	0.08	0.10	0.12	0.13	0.14	0.16	0.17
0.50	0.50	0.20	0.16	0.17	0.18	0.18	0.19	0.20	0.20	0.21	0.21
	0.30		0.10	0.11	0.12	0.13	0.15	0.16	0.17	0.18	0.19
	0.20		0.05	0.07	0.08	0.09	0.11	0.13	0.14	0.16	0.17
0.30	0.50	0.20	0.15	0.16	0.17	0.18	0.18	0.19	0.19	0.20	0.20
	0.30		0.09	0.11	0.12	0.13	0.15	0.16	0.16	0.17	0.18
	0.20		0.05	0.07	0.08	0.09	0.11	0.13	0.14	0.15	0.16
0.00	0.00	0.00	0.00	0.00	0.00	0.00	0.00	0.00	0.00	0.00	0.00
Rating: 201W Photometrically tested without ceiling board. Multiply UF values by service correction factors Calculate in accordance with CIBSE Technical Memorandum NO.5 1980											